

Phase-Lock Points



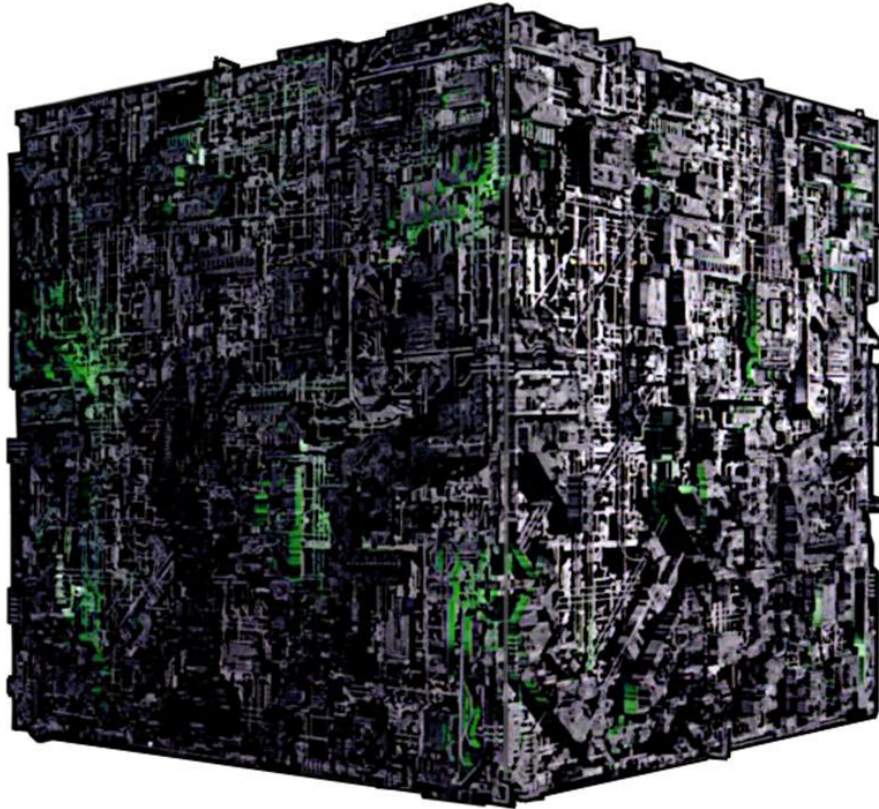
Part I

By Ciarán Handley

11th September 2018

The Borg

Chapter 1



The Borg can affect our biochemistry and our thoughts

For example the Borg can *inhibit* a hormone, enzyme or neurotransmitter in our bodies. Or they can *stimulate* the release of a hormone, enzyme or neurotransmitter in our bodies. This can affect our emotions, our memories and our thought patterns. They can also overwrite our psyche, reprogramming it.

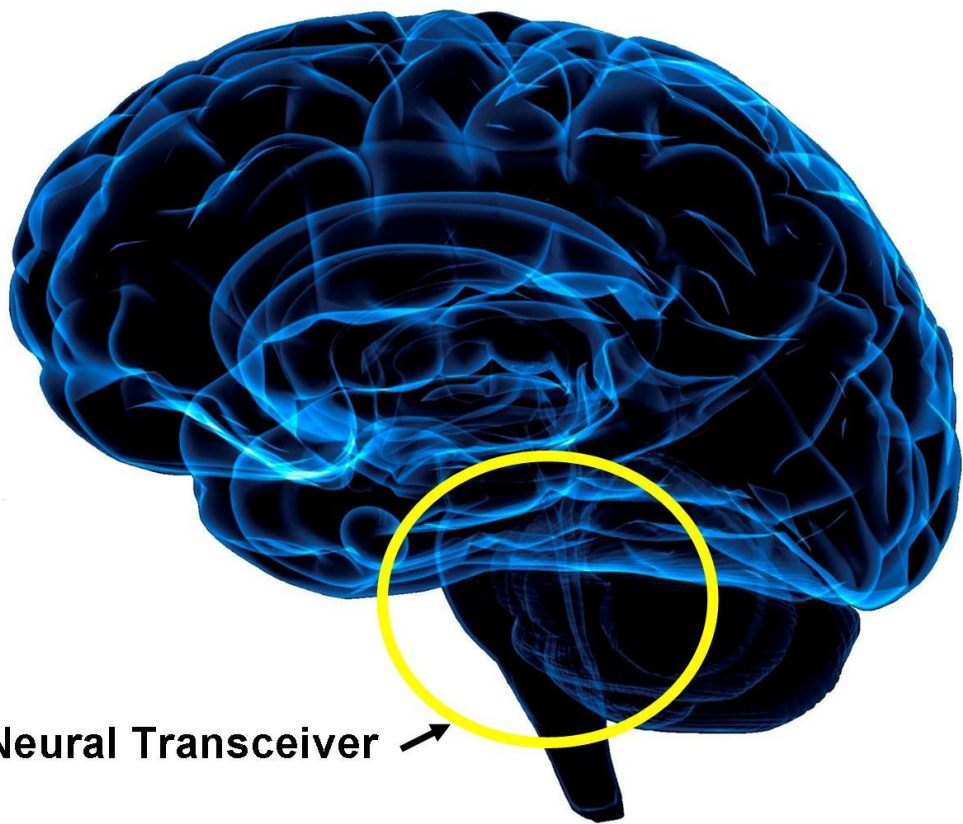
How do they do this?

[Zoolander – Brainwash](#)

Ok, now let's figure out how they do it.

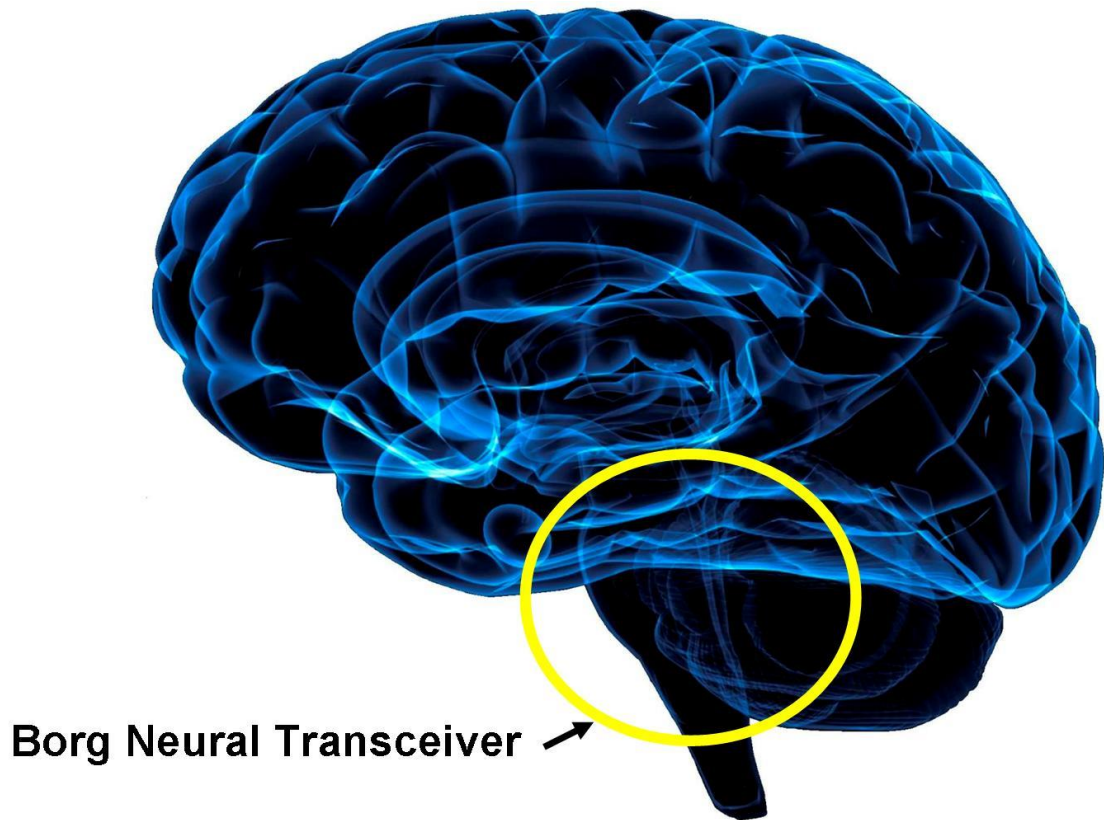
Understanding Assimilation

Chapter 1



Borg Neural Transceiver →

The brainstem



Borg Neural Transceiver →

The neural transceiver is located at the brainstem

There are many implants that can be located around the body, but of all implants, the neural transceiver is the most important. This is the controlling implant.

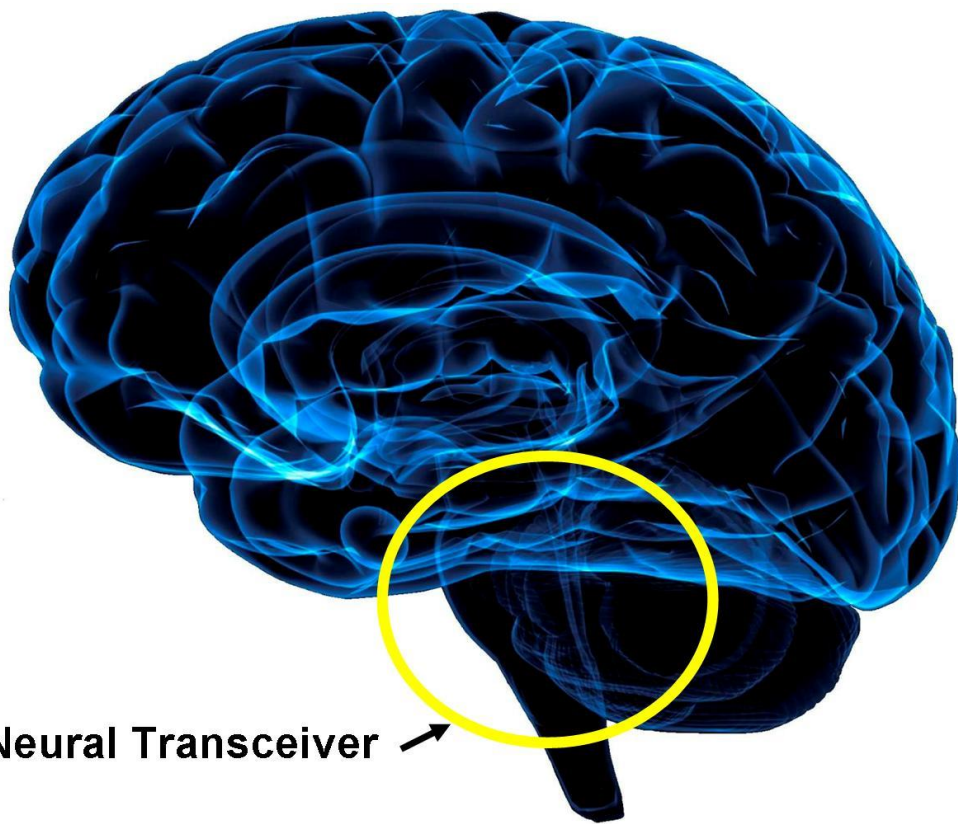
The implants are phase shifted so that they are out of phase with the body. If not for this, they would kill us. Any foreign body like that in our nervous system would be instantly fatal. So they are phase shifted. This also means that they cannot be detected using any technology that we possess on Earth. At least not directly. There is a way to detect them *indirectly*, which I'll write about later.

But first, let us get up to speed on this area of the brain.

[Central Nervous System Lecture](#)

Understanding Assimilation

Chapter 2



Borg Neural Transceiver →

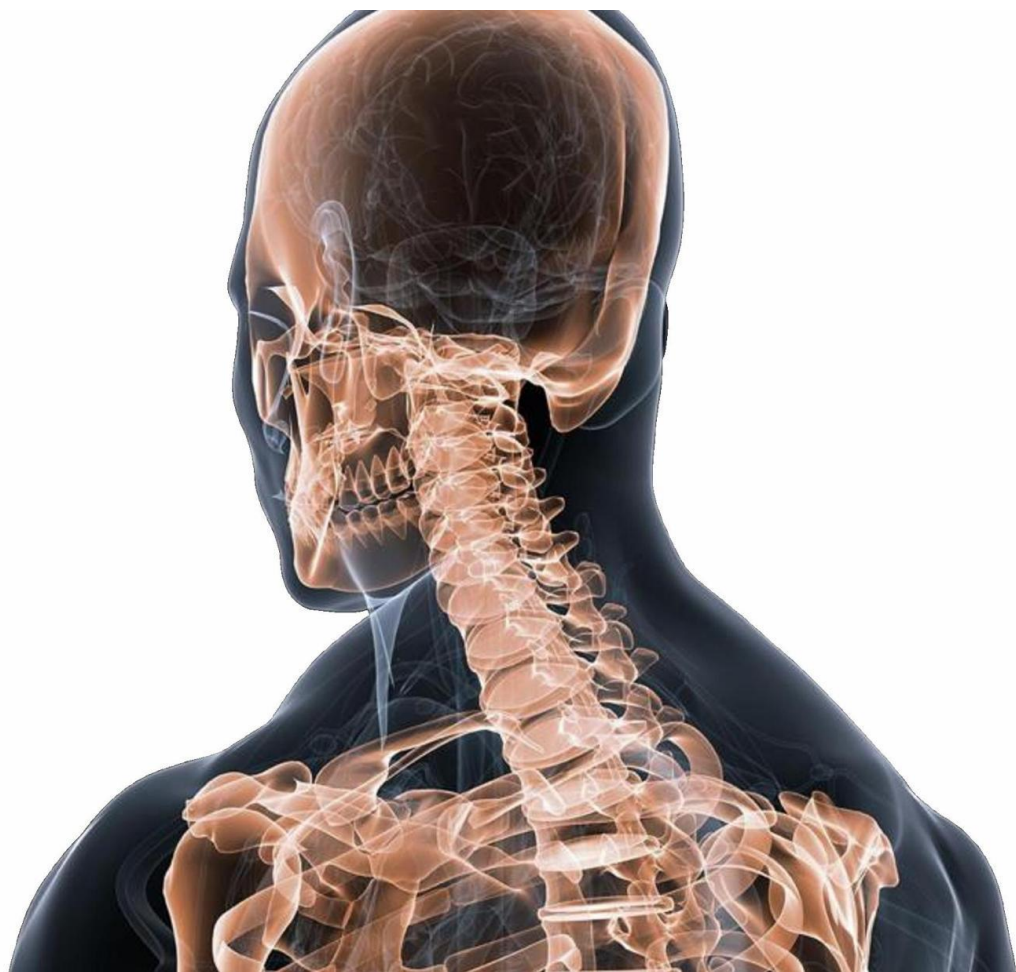
The neural transceiver is phase shifted

That means it is not implanted using surgery as we know it, cutting people open with scalpels. Because it is phase shifted, it is inserted into the brain stem by sliding it *through* the body. Being out of phase, it does not physically interact with the brain or skull as it passes through.

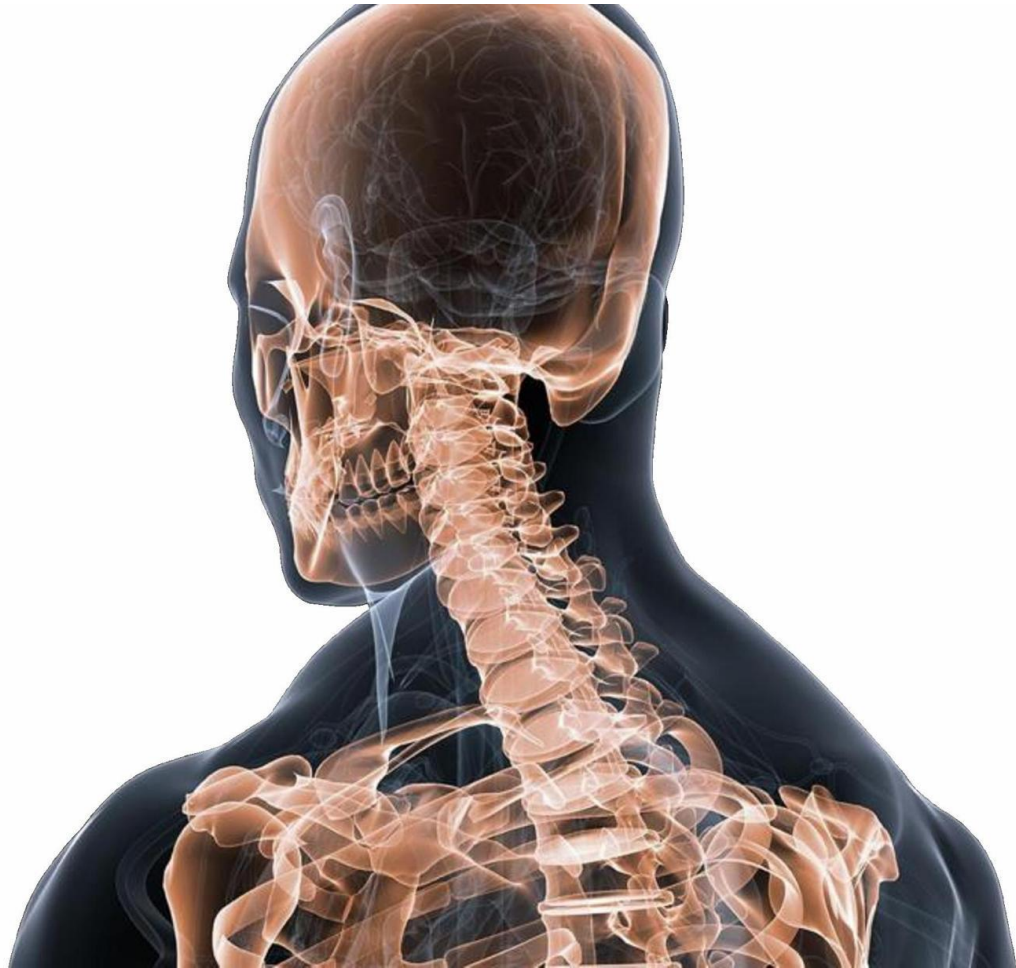
Inserting or removing an implant does *not* require open surgery as we would know it.

Understanding Assimilation

Chapter 3



Phase-lock points



*The neural transceiver is **phase-locked** to reference points in the transverse process and spinous process of the vertebrae*

This is how the neural transceiver and other implants stay locked in with the body when a person moves around.

Let us first understand the problem.

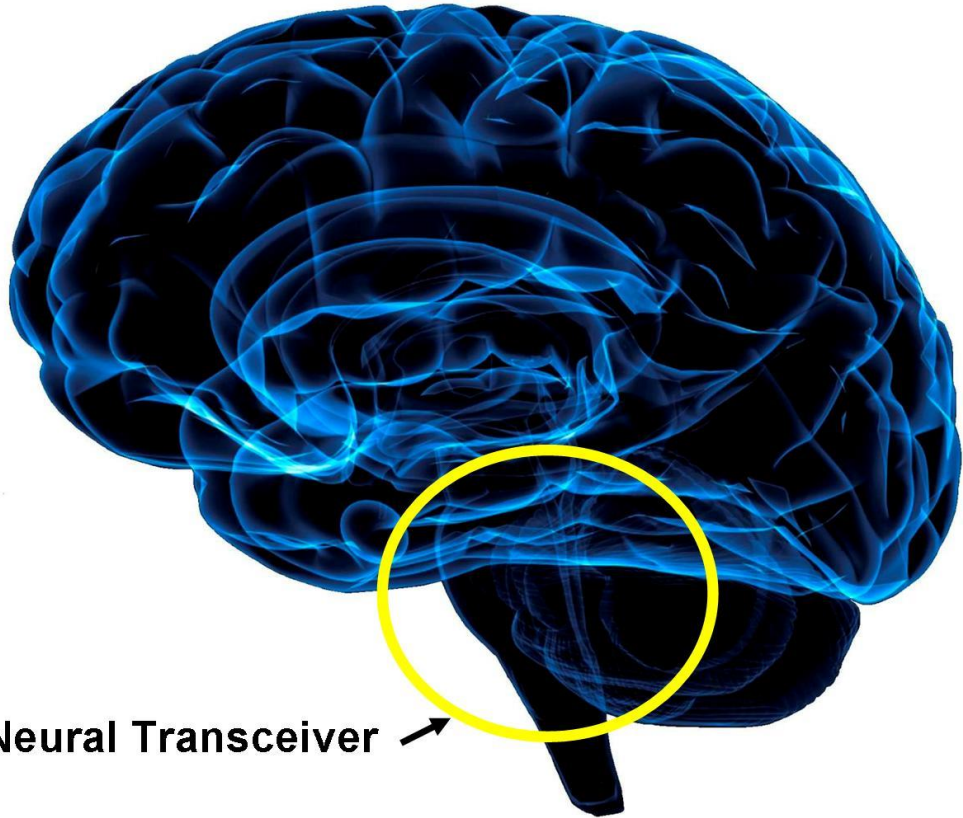


*In “Star Trek The Next Generation – The Next Phase”,
Geordi La Forge and Ensign Ro were **out of phase** with
the ship and the crew*

That was a different Enterprise ship to the one above, but I’ll use this picture for illustration purposes. You see an accident moved Geordi La Forge and Ensign Ro out of phase with the rest of the ship. They could then walk through walls and put their hands through solid objects, passing right through matter as if it didn’t exist.

None of the rest of the crew could see them and so everyone thought that they were dead. They weren’t. They were just shifted out of phase.

[Star Trek The Next Generation – The Next Phase](#)



Borg Neural Transceiver →

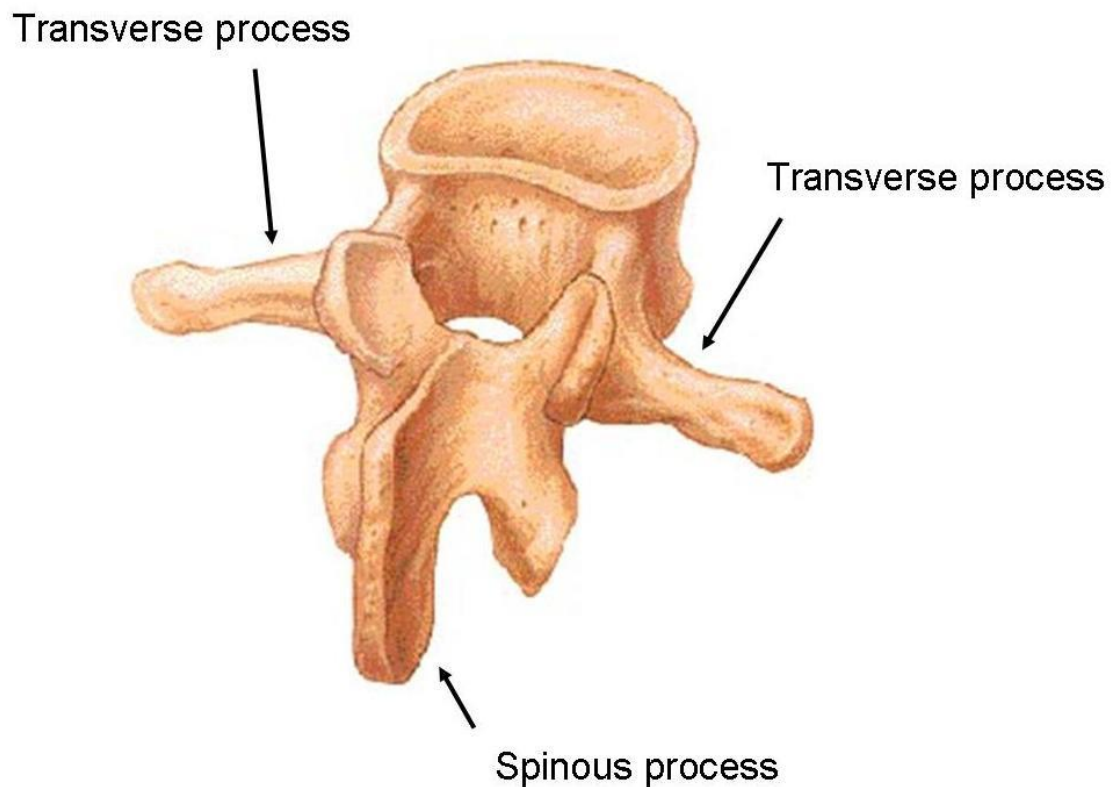
*Now let us imagine that there is a neural transceiver in
your head*

You take a step forward. When you do this the neural transceiver should not follow you. This is because it is *out of phase* with your body and so it can pass right through you as if you don't exist. If you step forward you should simply step away from the neural transceiver, leaving it behind.

Yet it *does* follow you. Everywhere you go. If you go left, right, up, down or sideways, the neural transceiver follows you. Wherever you go. It is always in your upper brain stem.

How can this be?

That is the problem we are looking at now.



First some terminology

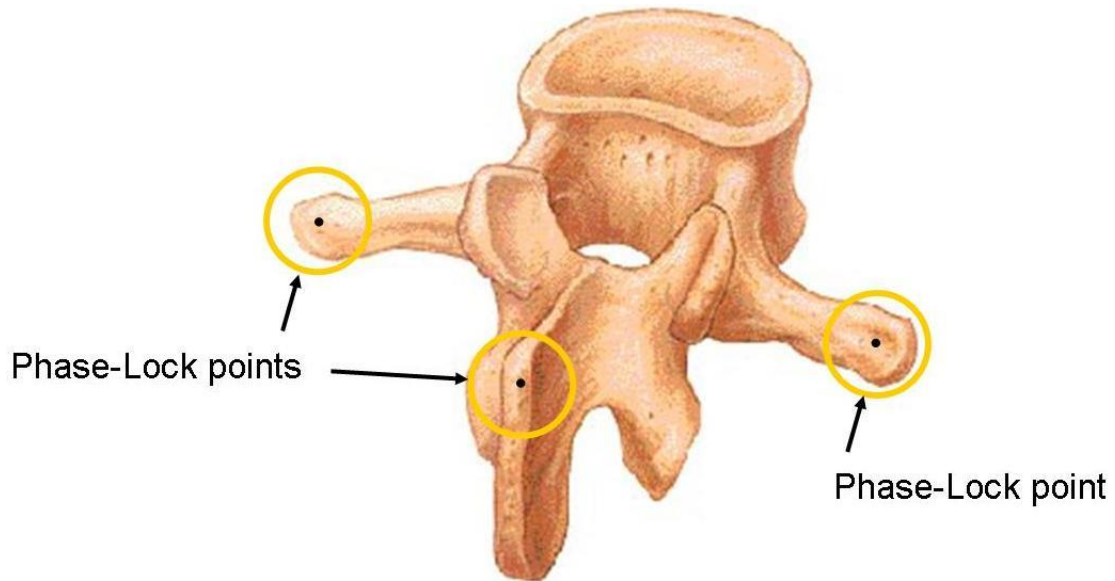
Here we have a picture of a vertebra, which is one of the bones that make up the spine. The bone has a number of protrusions on it.

A ***transverse process*** is the bony protrusion that goes off to the side. There are two of these on a vertebra.

The ***spinous process*** is the bony protrusion that we see here in the front. These make up the bumps that you feel if you run your hand down someone's back. They are the bumps you see along the spine when looking at someone's back.

Ok, we have enough terminology now that we are good to go.

On to the next part.

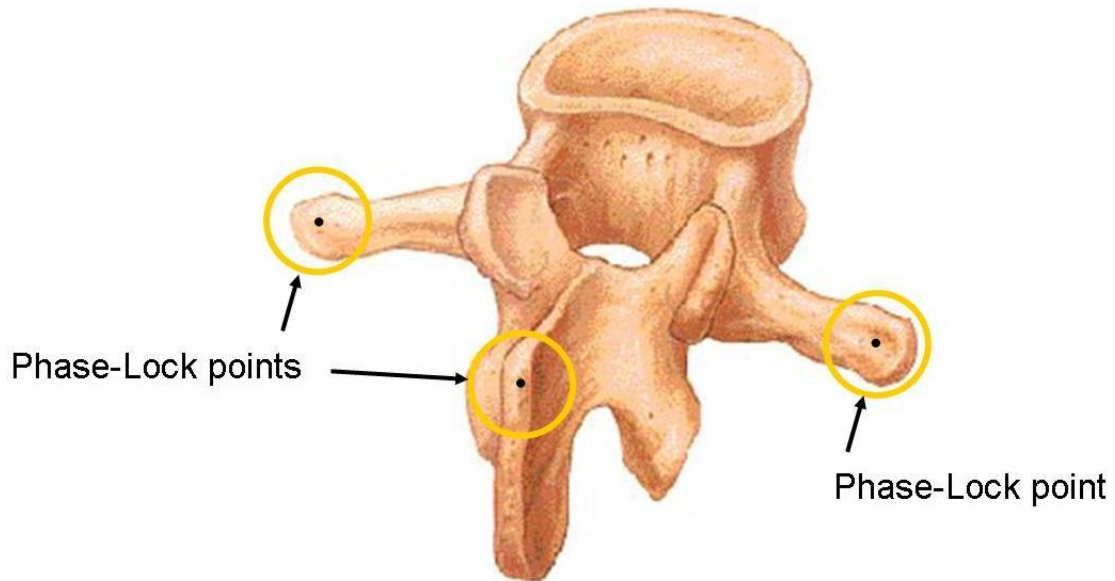


The Small Greys insert tiny points of metal in the different locations I have shown here

Normally a small piece of metal like this would not last in the body. It is so small that it would simply corrode over time. However this metal is shifted to upper harmonics, which change its properties. It does *not* corrode over time.

I said earlier that Borg implants cannot be detected directly using any technology we have on Earth. However it is possible to detect them *indirectly*. This is how.

These tiny pieces of metal are microscopic, but they are not out of phase with the body. They are *in-phase*. There will be a slight scarring in the bone at each of these points. This scarring, while miniscule, can be detected by our technology on Earth.



The purpose of these points is to give phase-lock reference points so that the implants can track the movement of the spine

Let me explain. Each of these reference points is coded at the second harmonic. The neural transceiver has the exact frequency of this harmonic. It has the technology to read this harmonic, even though it is out of phase.

Let us imagine that the person steps forward. When this happens there is a ***Doppler Shift*** in frequency between the neural transceiver and the second harmonic of the phase-lock points. This allows the computer located within the neural transceiver to track the exact movements of the person by a process called ***phase-locking***.

This is how the neural transceiver is able to remain fixed in the same position in the upper brainstem even when the person is moving around.

It is not only the neural transceiver that uses these phase-lock points. *All* implants use them, so they can be found in vertebrae all along the spine. In addition there are also phase-lock points used in the pelvis, the skull, and along the long bones of the body.

I have mentioned a couple of terms here. *Doppler Shift* and *Phase-locking*. These will require some explanation but we have the essential understanding here – that there are reference points in the bones of the body which the Small Greys use to lock the implants onto, by a process known as *phase-locking*. These points are *in-phase* with the body and so they can be detected using our technology.

As to the mechanics of how this works – Doppler Effect and Phase-locking – we will come to this later. I will explain it in time. But for now we have the essential information we need to proceed.



“Giving us an indirect way to gain evidence of the implants, Gráinne?”

“Right, Béibhinn. Earth technology is not at the level to detect the implants directly. But it is at the level to detect these phase-lock points.”

“Those points should not be there in our skeletons, Gráinne.”

“No, Béibhinn. They should not.”

“So if they are found, then this gives evidence that something unusual is happening?”

“Yes, Béibhinn. Doctors will already have seen the scar tissue in bones from these phase-lock points. But they would not have known what caused them.”

“So the evidence is already there and known to doctors, but they have not been able to interpret it before now?”

“Right, Béibhinn. They couldn’t interpret it because they didn’t know about the Small Greys.”



“But maybe they will see those points now with a fresh set of eyes”

Phase-Lock Points



End of Part I